

Bridge Mountain Trail



Willow Spring
 ♿ P 🗺️ 🍷 🚰

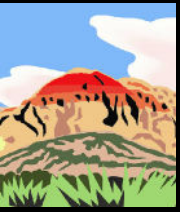
7.90 mi

North Peak

Bridge Mountain Trail



Legend



- | | | |
|--|-----------------------|------------------------------------|
| P Parking | Picnic area | Scenic Drive |
| Restrooms | Wheelchair accessible | Rocky Gap Road |
| Trail access point - - - Existing trails | Leashed pets | Wilderness boundary |
| | | 4x4/high - clearance vehicles only |

Red Rock Canyon National Conservation Area

Bridge Mountain
 Distance: 7.90 mi / 12.71 km one way
 Elevation: 4580' (low) - 7196' (high)

Trail uses:
 Hiking

Date: 1/1/2020
 No Warranty is made by the Bureau of Land Management as to the accuracy, reliability, or completeness of these data for individual use or aggregate use with other data.