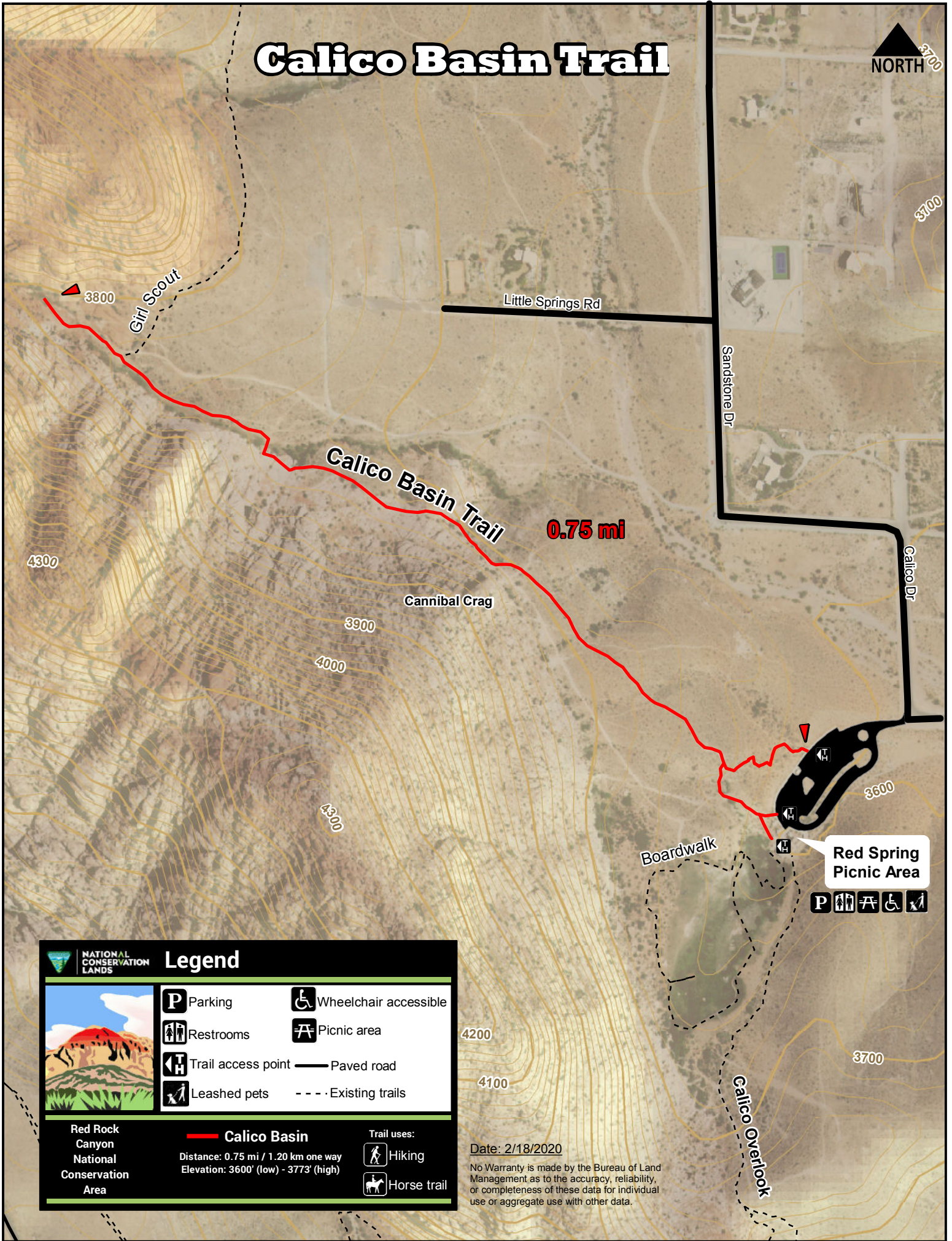



# Calico Basin Trail



**0.75 mi**

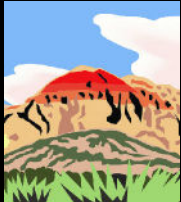
**Red Spring Picnic Area**





**NATIONAL CONSERVATION LANDS**

## Legend

 <ul style="list-style-type: none"> <li> Parking</li> <li> Restrooms</li> <li> Trail access point</li> <li> Leashed pets</li> </ul>	<ul style="list-style-type: none"> <li> Wheelchair accessible</li> <li> Picnic area</li> <li> Paved road</li> <li> Existing trails</li> </ul>
--	---

**Red Rock Canyon National Conservation Area**

**Calico Basin**

Distance: 0.75 mi / 1.20 km one way  
Elevation: 3600' (low) - 3773' (high)

**Trail uses:**

- Hiking
- Horse trail

Date: 2/18/2020

No Warranty is made by the Bureau of Land Management as to the accuracy, reliability, or completeness of these data for individual use or aggregate use with other data.